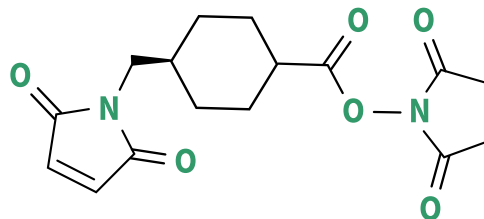


PRODUCT SPECIFICATION

SMCC (Succubumidyl-4-
(N-maleimidomethyl) cyclohexane-
1-carboxylate)



WuXi Biologics
Global Solution Provider



READY-MADE PAYLOADS AND LINKERS

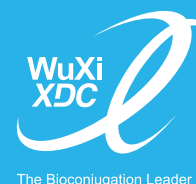
WuXi XDC offers a growing library of common payloads and linkers for use in a variety of R&D and pharmaceutical purposes including use as chemical intermediates in the production of antibody drug conjugates (ADCs) and other bioconjugates. These ready-made and ready-to-conjugate small molecule entities can be manufactured as both GMP and non-GMP grade.

SMCC (Succubumidyl-4- (N-maleimidomethyl) cyclohexane-1-carboxylate)

CAS Number	64987-85-5
Chemical Formula	C ₁₆ H ₁₈ N ₂ O ₆
Molecular Weight	334.33
Quality	Non GMP / GMP
Storage Conditions	<-20 °C
Purity	>98%
DMF	Available
Quantity	mg to kg
Lead Time	In Stock / 4-6 Weeks

About WuXi XDC

WuXi XDC, a WuXi Biologics subsidiary, is a joint venture between WuXi Biologics and the WuXi AppTec subsidiary, WuXi STA. The joint venture greatly simplifies Antibody Drug Conjugate (ADC) and other bioconjugate drug development by providing all discovery, development, testing and GMP manufacturing activities for all intermediates (payloads, linkers and biologics) and the bioconjugate, under one company and in one centralized region. This concentration of expertise and geography greatly reduces project hand-off risks and project timelines and provides an unparalleled single source solution to drug developers worldwide.



Your Single-Source for Bioconjugation
Development and cGMP Manufacturing